

Gruppi Vasca Doccia / Bathtub /shower Tap Sets

LIMON**.ELIM436D**

Miscelatore con deviatore

Mixer single lever Tap with handheld shower holder



Prima di realizzare l'impianto
consultare la scheda Cod.
16024 e 16018

Before installing consult the
technical sheet Cod. 16024
and 16018

Agape srl

via A. Pitentino, 6 46037 Governolo
Roncoferraro (MN), Italy

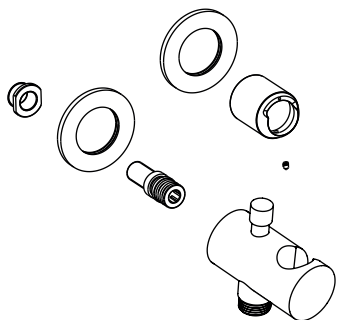
T +39 0376 250311 / F +39 0376 250330

e-mail: info@agapedesign.it

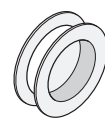
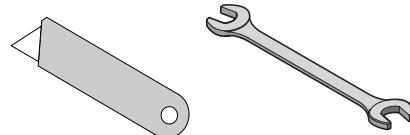
www.agapedesign.it

.ELIM436D		2/7
COD. 202136	VERS. 20211116	

CONTENUTO DELLA CONFEZIONE
PACKAGE CONTENTS



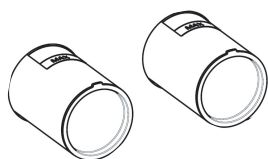
UTENSILI NECESSARI
NECESSARY TOOLS



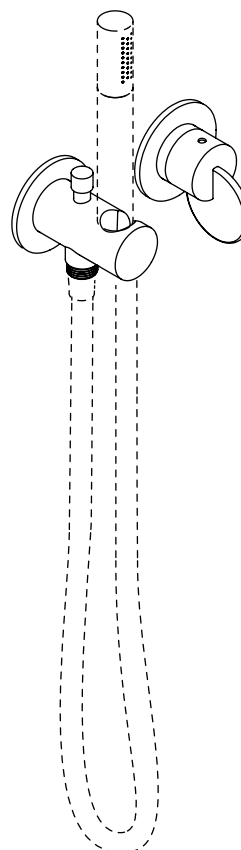
TEFLON

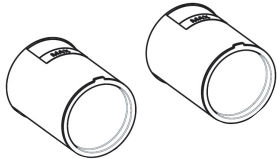
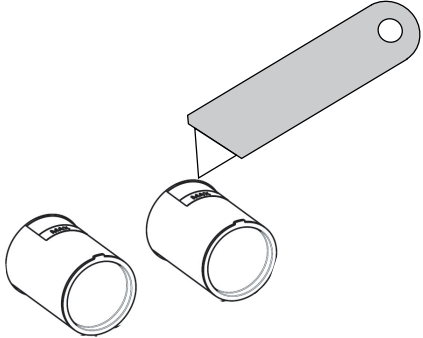
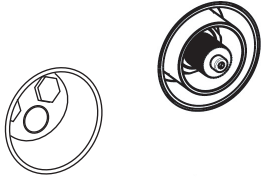
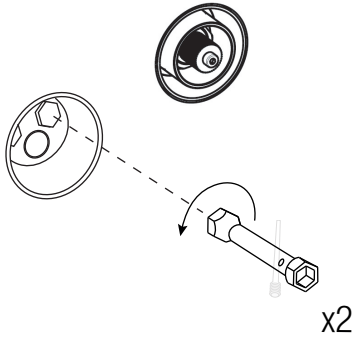
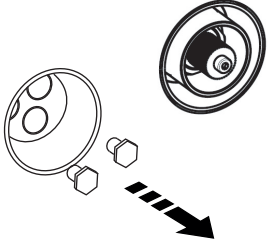
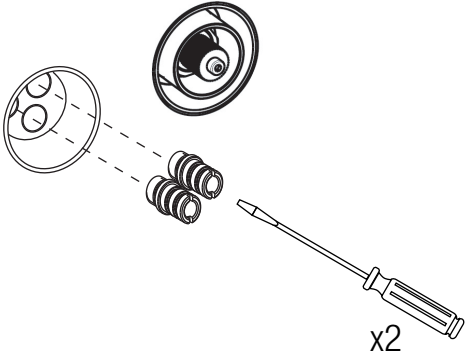


PREDISPOSIZIONE
PREPARATION



INSTALLATO
INSTALLED

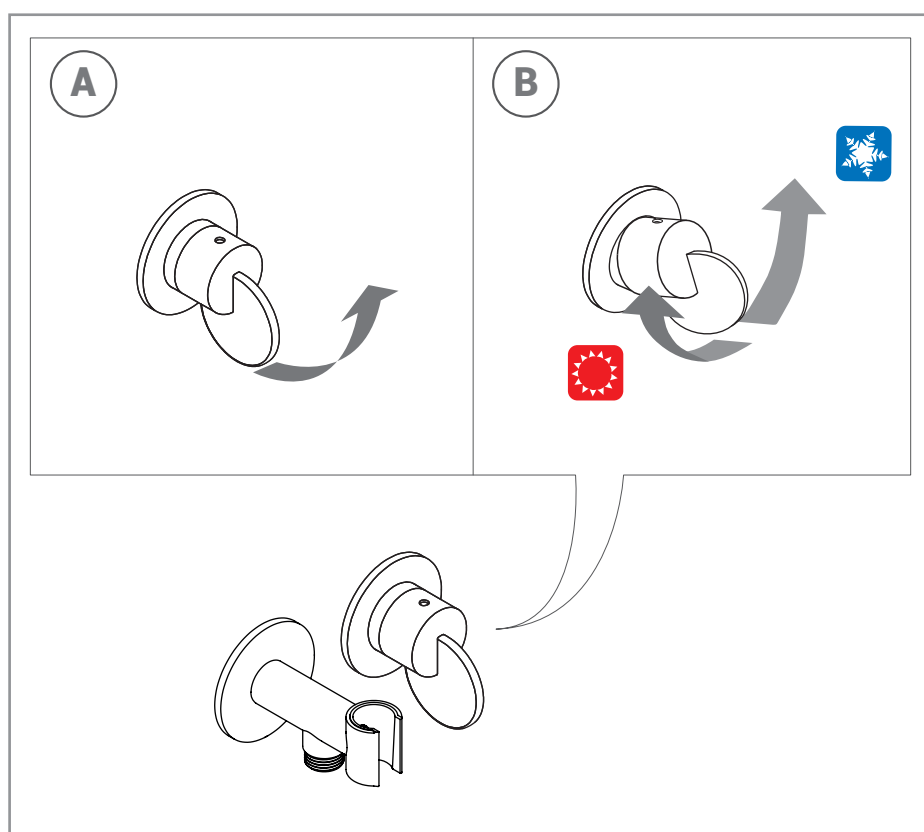


<p>1</p> 	<p>2</p> 
<p>3</p> 	<p>4</p> 
<p>5</p> 	<p>6</p> 

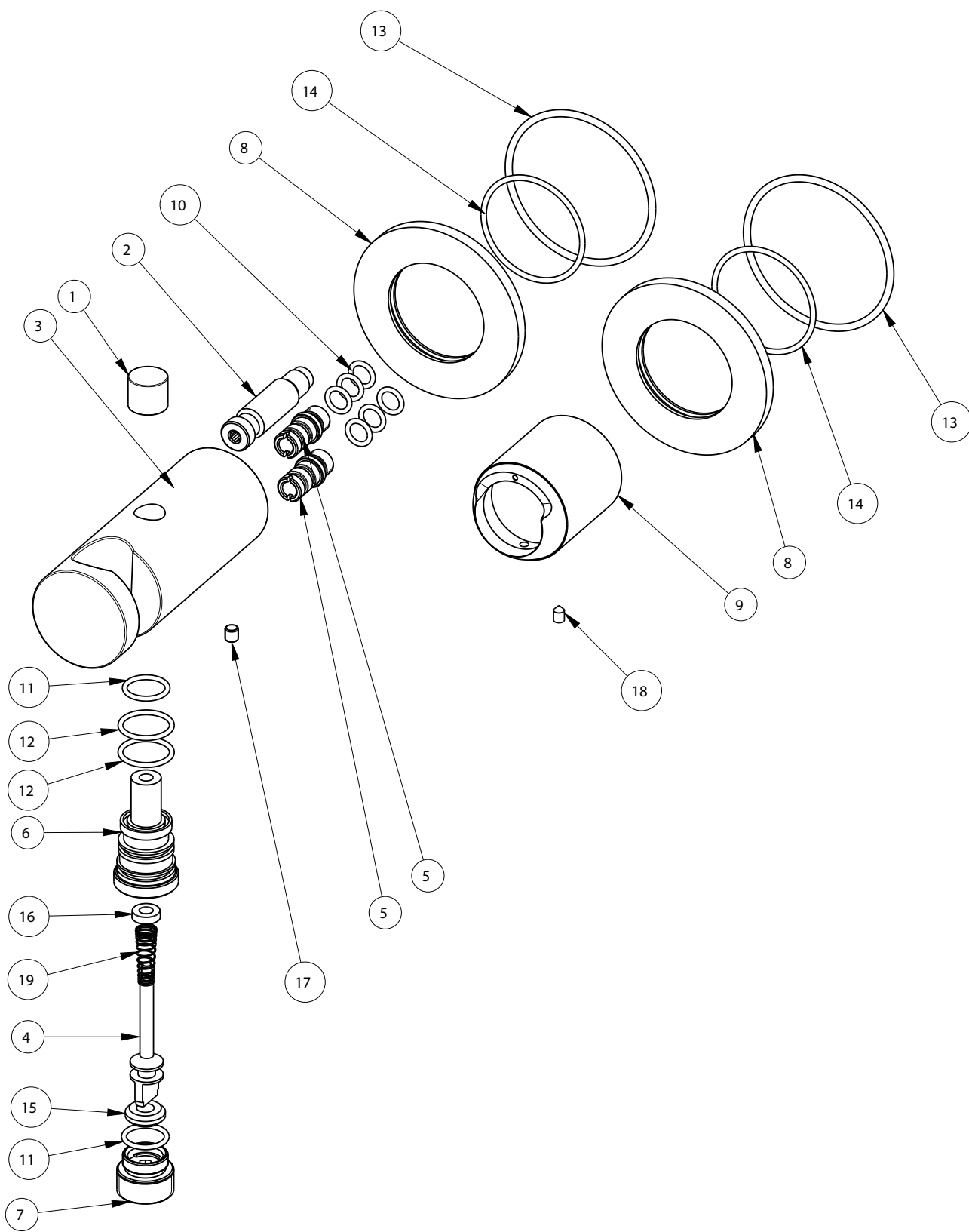
<p>7</p> <p>ES.10</p>	<p>8</p>
<p>9</p> <p>Es. 2</p>	<p>10</p>
<p>11</p>	<p>12</p>

ISTRUZIONI DI UTILIZZO
INSTRUCTIONS FOR USE

- (IT) Al primo utilizzo o dopo un lungo periodo di inutilizzo, non consumare il primo mezzo litro di acqua potabile erogata. Chiudere l'impianto idraulico in caso di prolungata assenza. Controllare periodicamente la tenuta.
- (EN) On first use or following prolonged periods of inactivity, do not use the first half-litre of drinking water dispensed. Shut off the plumbing system in the event of a long absence. Check the water-tightness regularly.



.ELIX436D



MANLIM01

