

Gruppi Vasca Doccia / Bathtub / shower Tap Sets

LIMON

.ELIM435D

Miscelatore monocomando con doccetta

Mixer single lever Tap with handheld shower holder

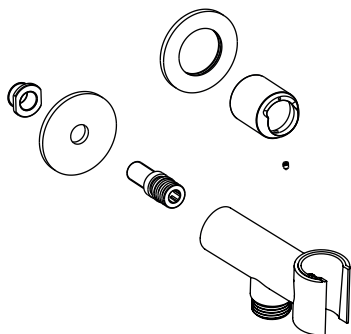


Prima di realizzare l'impianto  
consultare la scheda Cod.  
16024 e 16018

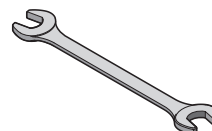
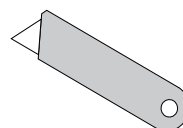
Before installing consult the  
technical sheet Cod. 16024  
and 16018

<b>ELIM435D</b>		2/7
COD. 202135	VERS. 2021115	

CONTENUTO DELLA CONFEZIONE  
PACKAGE CONTENTS



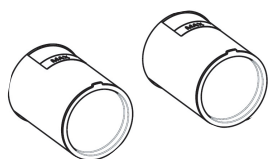
UTENSILI NECESSARI  
NECESSARY TOOLS



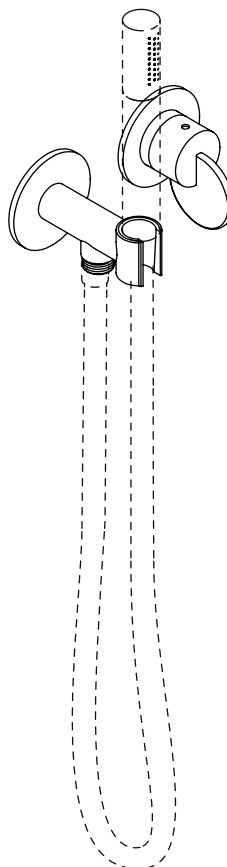
TEFLON

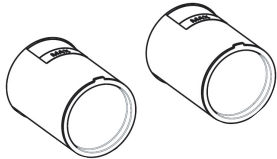
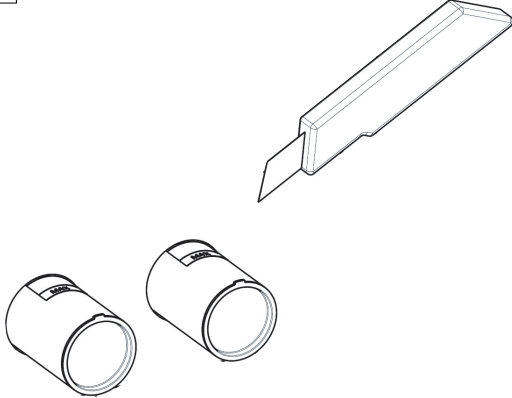

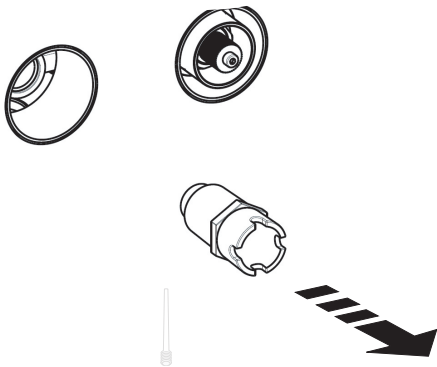
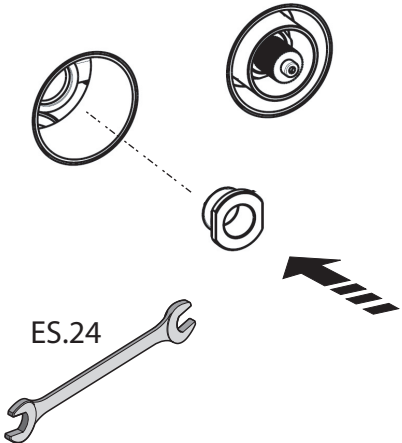



PREDISPOSIZIONE  
PREPARATION

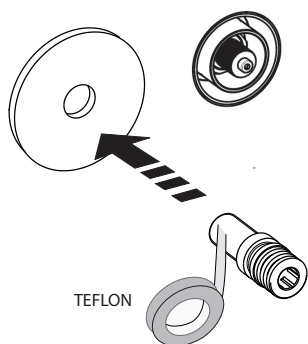


RUBINETTO DA PIANO  
TOP MOUNTED TAP

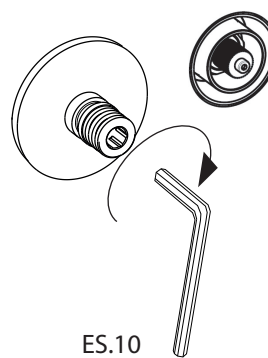


<p>1</p> 	<p>2</p> 
<p>3</p> 	<p>4</p> 
<p>5</p> 	<p>6</p> 

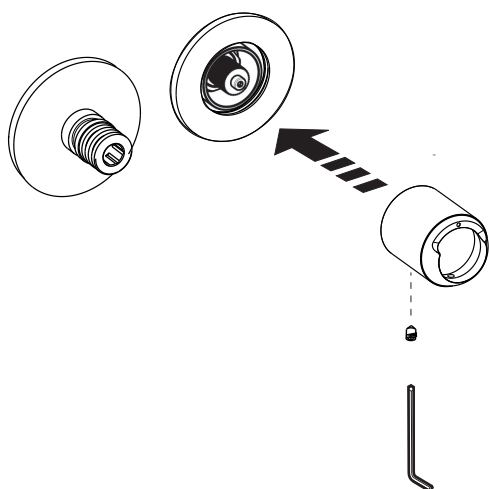
7



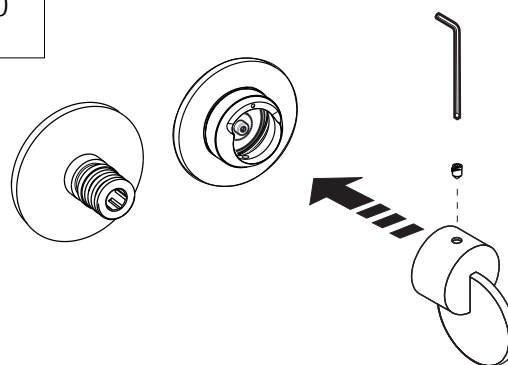
8



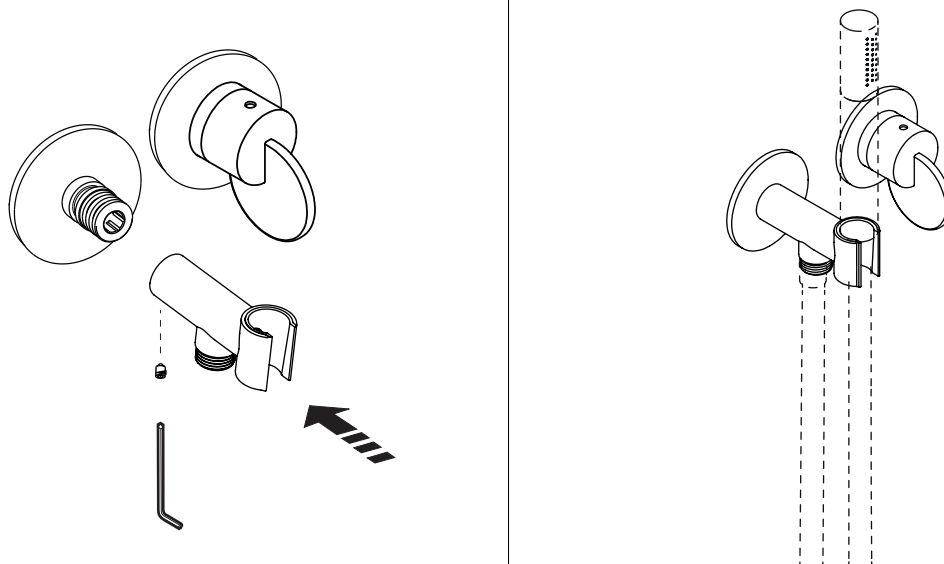
9



10

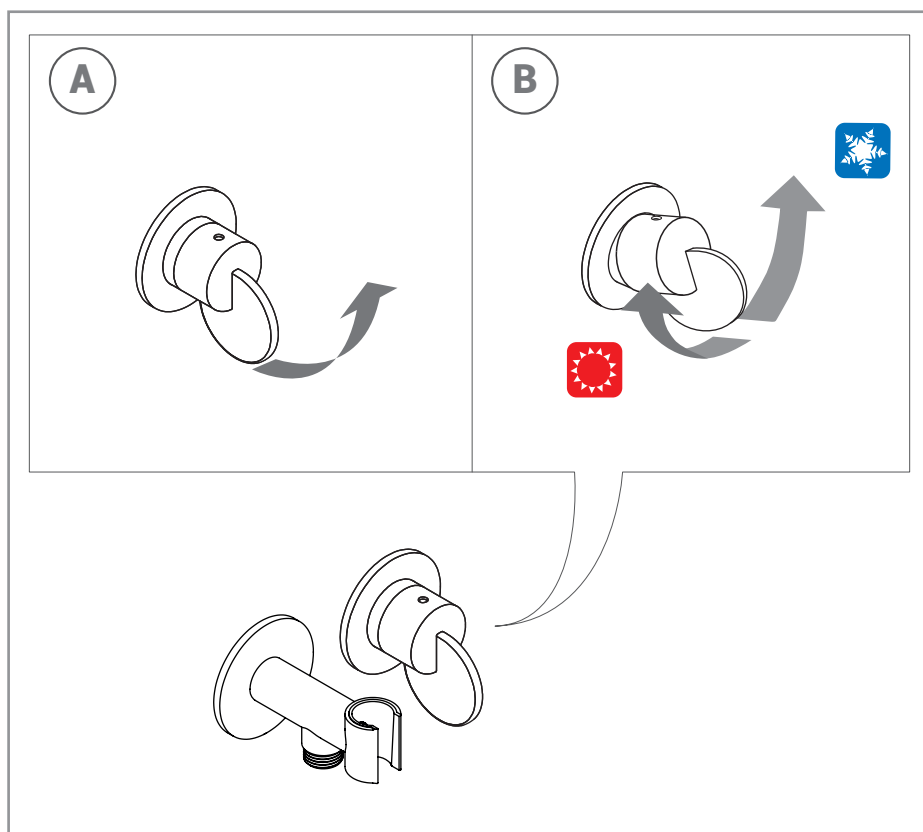


11

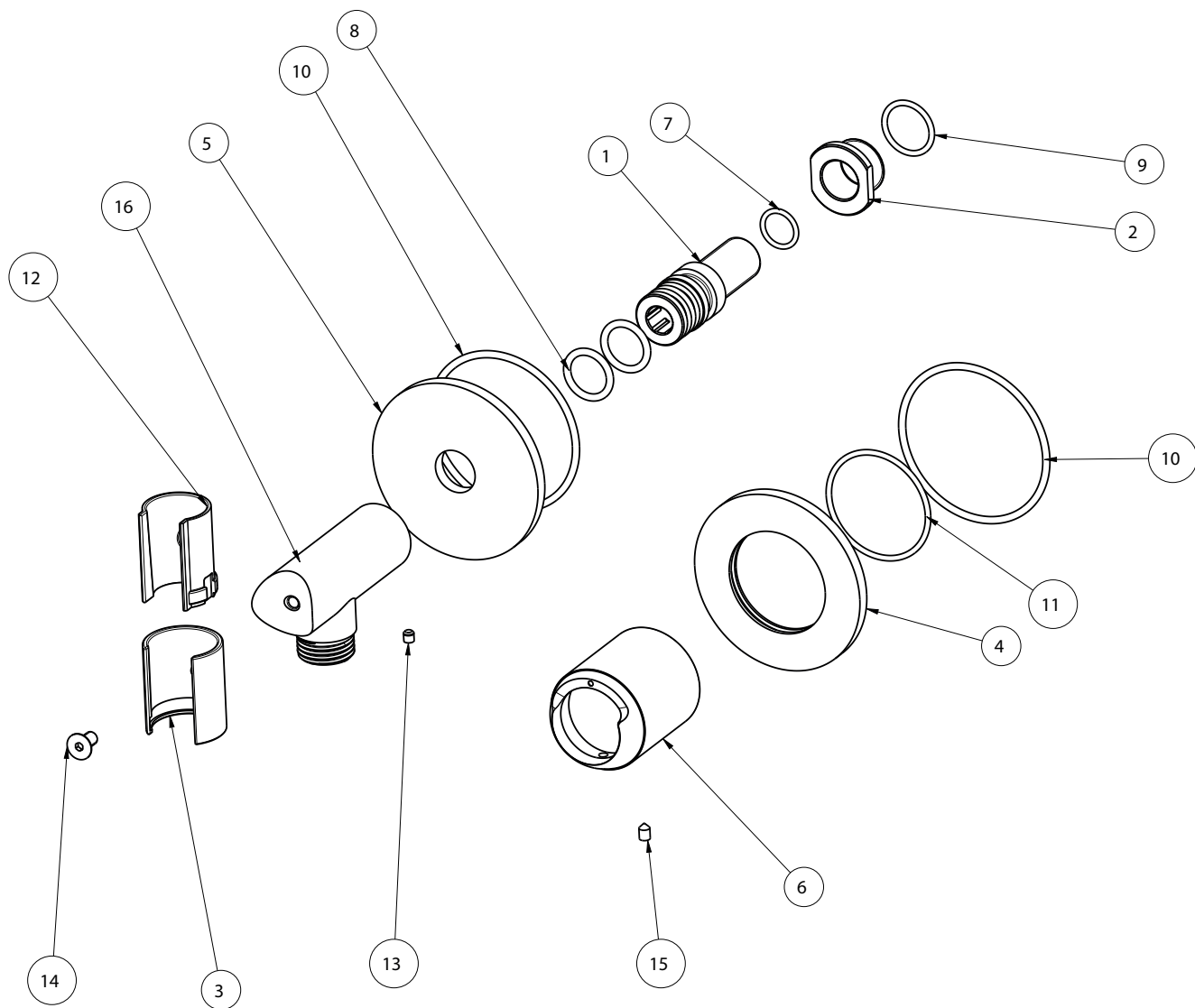


ISTRUZIONI DI UTILIZZO  
INSTRUCTIONS FOR USE

- (IT) Al primo utilizzo o dopo un lungo periodo di inutilizzo, non consumare il primo mezzo litro di acqua potabile erogata. Chiudere l'impianto idraulico in caso di prolungata assenza. Controllare periodicamente la tenuta.
- (EN) On first use or following prolonged periods of inactivity, do not use the first half-litre of drinking water dispensed. Shut off the plumbing system in the event of a long absence. Check the water-tightness regularly.



.ELIX435D



MANLIM01

